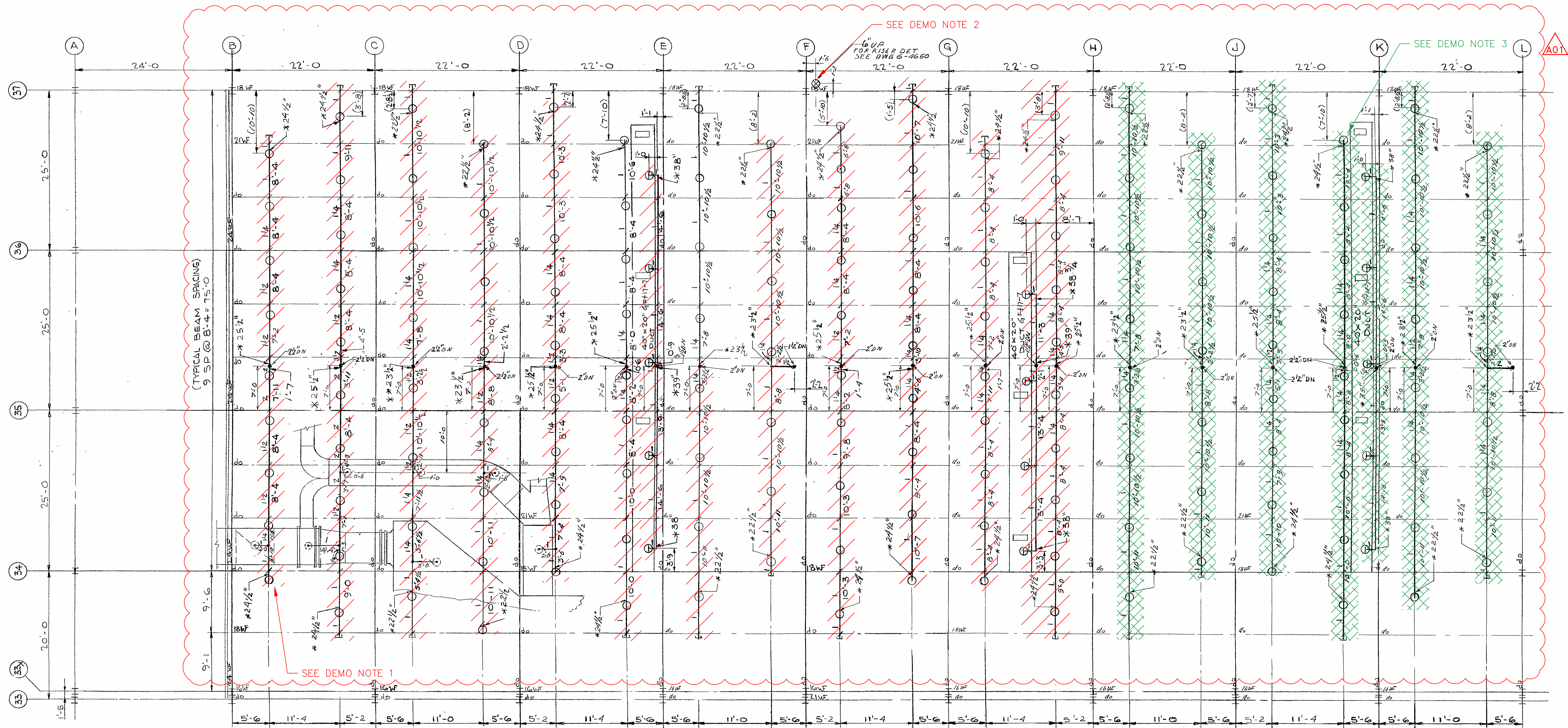
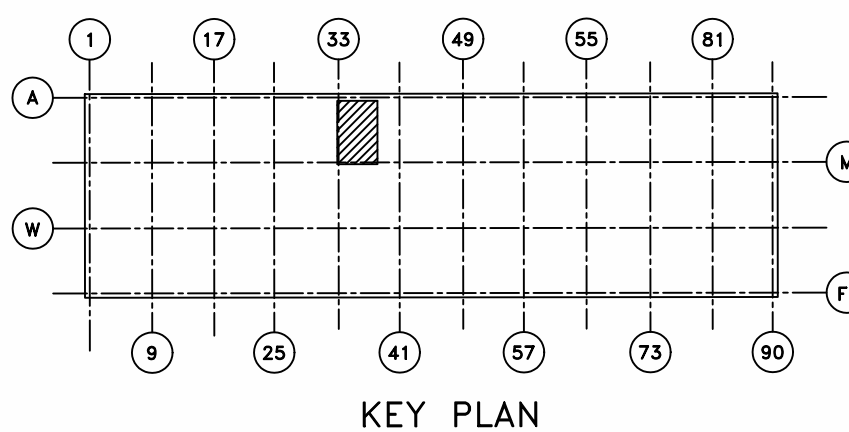




- DEMO NOTES**
1. REMOVE ALL BULK HEADS, SPRINKLERS, RISERS, PIPE, AND PIPE HANGERS.
 2. CUT, CAP 6" SPRINKLER MAIN AT A CONVENIENT HEIGHT ABOVE CELL FLOOR.
 3. ABANDON IN PLACE, MAY BE REMOVED AS NEEDED.
 4. FME CAP ANY CUTS IN ABANDON SYSTEMS.
 5. SPRINKLER SYSTEMS SHALL NOT BE REMOVED UNTIL APPROVED BY THE DEPARTMENT OF ENERGY.



SPRINKLER LAYOUT GROUND FLOOR
CEILING AND INSIDE DUCTS
SCALE: 1/8" = 1'-0"



* DESIGN MANAGER:
APPROVAL AND DATE:

This document has been reviewed and is UNCLASSIFIED and NOT UCN. This review does not constitute clearance for public release.
#192 *DIG. SIG.
Authorized Derivative Classifier Date

POOR QUALITY ORIGINAL

BASE DOCUMENT: X-330SP 5-4663 REVISION 3 CAD OVERLAY

A01 CFC PER ESO E6663-001		*DIG SIG	
AS-BUILT FOR ESO #E2931		DATE: 10/18/18	
2 ISSUED FOR BIDS		DATE: 5/19/18	
CERTIFIED FOR CONSTRUCTION		DATE: 5/16/18	
FOR APPROVAL		DATE: 5/16/18	
FOR INFORMATION		DATE: 5/16/18	
ISSUE PURPOSE		BY: A.C. GILBERT	
UNITED STATES ATOMIC ENERGY COMMISSION ARTHUR G. MCKEE & COMPANY INDUSTRIAL ENGINEERING DIVISION - CLEVELAND OHIO CONTRACT NO. AT (40 1) 2138			
DRAWING TITLE 386 SPRINKLER PLAN SYSTEM 32 AT GROUND FLOOR			
DRAWING APPROVED-DATE		DRAWING APPROVED-DATE	
DESIGN: <i>[Signature]</i>		DESIGN: <i>[Signature]</i>	
ARCHITECT ENGINEER		ARCHITECT ENGINEER	
DATE: 5/16/18		DATE: 5/16/18	
CHECKED: C.W.		CHECKED: C.W.	
DATE: 5/16/18		DATE: 5/16/18	
APPROVED: <i>[Signature]</i>		APPROVED: <i>[Signature]</i>	
DATE: 5/16/18		DATE: 5/16/18	
PROJECT: PORTSMOUTH		PROJECT: PORTSMOUTH	
BUILDING: X-330SP 5-4663		BUILDING: X-330SP 5-4663	
SHEET: A01		SHEET: A01	

HYDRANT SYMBOLS	DEVICE SYMBOLS	FITTING SYMBOLS	VALVE SYMBOLS
<div>TWO-WAY</div> <div>THREE-WAY</div>	<div>NON-FREEZE VALVE ASSY</div> <div>ALARM VALVE IN RISER</div> <div>DRY-PIPE VALVE (DIFFERENTIAL TYPE)</div> <div>DRY-PIPE VALVE (W/QUICK OPEN DEVICE)</div> <div>WATER MOTOR GONG</div>	<div>RISER THRU FLOOR</div> <div>VERTICAL BEND (NOT RISER)</div> <div>SWING JOINT</div> <div>PIPE HANGER LOCATION</div> <div>U/G GATE (W/NOIC POST)</div> <div>U/G GATE (W/VALVE BOX)</div>	<div>GATE</div> <div>GLOBE</div> <div>ANGLE</div> <div>SCREW CHECK</div> <div>FLANGED CHECK</div> <div>U/G GATE (W/NOIC POST)</div> <div>U/G GATE (W/VALVE BOX)</div>
<div>PIPE SYMBOLS</div> <div>NEW STEEL PIPE</div> <div>NEW UNDERGROUND</div> <div>EXIST'G UNDERGROUND</div>			

SPRINKLER SYMBOLS

212°

325° - 360°

SPECIAL - INDICATE TYPE

SP #1

FENDANT - INSIDE MOTOR

FENDANT - NOT INSIDE

UPRIGHT HEAD INSIDE

DUCT

AUTO SPRINKLERS (COUNT)	
212°	-
325° - 360°	-
SPECIAL #	-
SPECIAL *	-
TOTAL HEADS THIS SHEET	

SHEET NO.	TITLE	SHEET NO.	TITLE
	REFERENCE DRAWINGS		REFERENCE DRAWINGS